



### S1060 Sensor

Handheld Micro-USB

DRH200-W

Handheld Apple Lightning

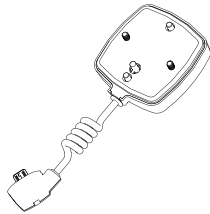
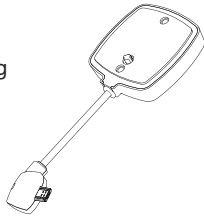
DRH201-W

Handheld USB Type C

DRH202-W

Display Sensor

DRD200-W



Tablet Micro-USB

DRT200-W

Tablet Apple Lightning

DRT201-W

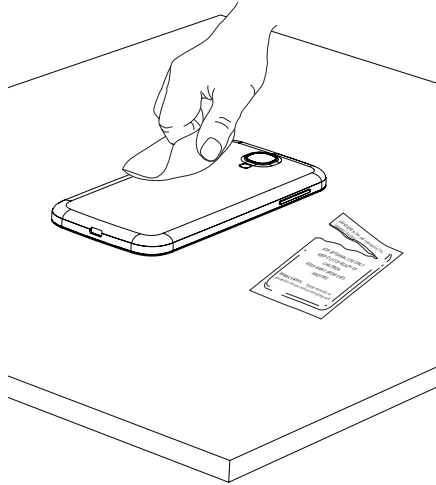
Tablet USB Type C

DRT202-W

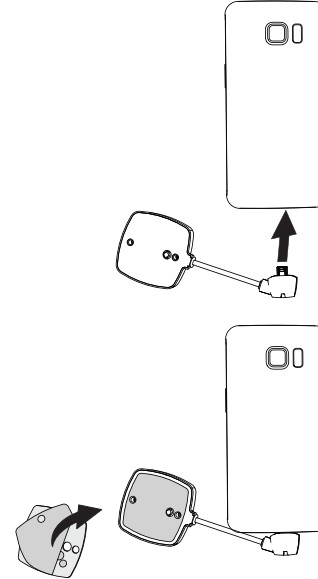
Display Sensor

DRD200-W

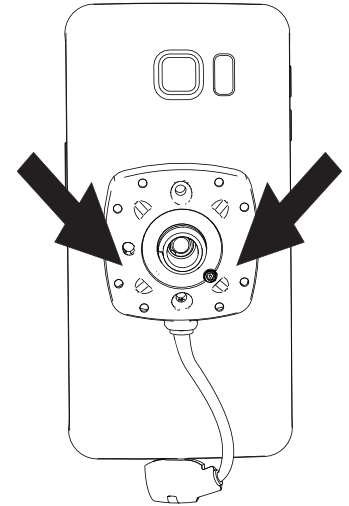
- 1** Wipe device with alcohol wipe provided. **Let it dry completely.**



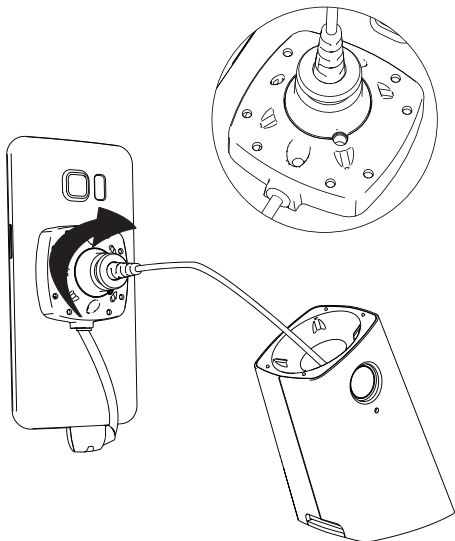
- 2** Plug power connector into merchandise. Remove clear film from adhesive and attach to sensor. Remove second clear film from adhesive.



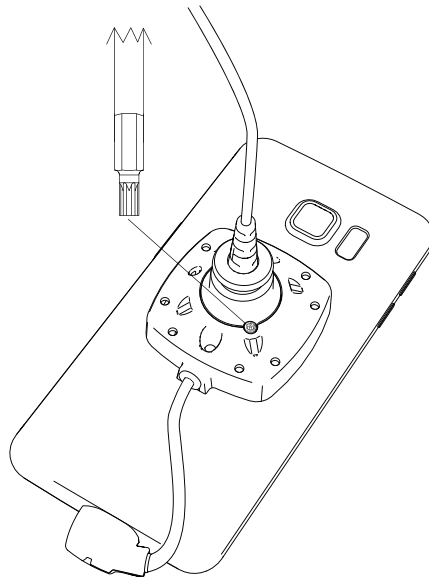
- 3** Position sensor in center of back of merchandise. Press firmly for at least 10 seconds.



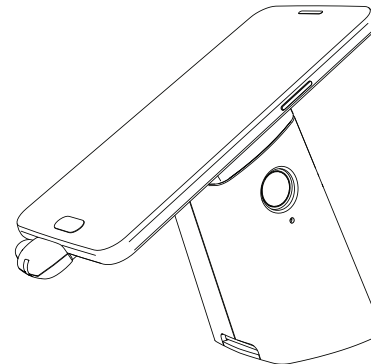
- 4** Pull sensor collar and cable from stand. Screw sensor collar to sensor. Confirm half-hole on sensor collar aligns with hole in sensor as shown.



- 5** Use T-8 bit to turn screw counter-clockwise to move screw into locking position (about 2 full rotations).



- 6** Place merchandise on stand. Final assembly should resemble image below.



SD0336 Rev2 04/18/16

# InVue

[www.invue.com](http://www.invue.com)

NA / LATAM // 704.752.6513 • 888.55.INVUE

EMEA // +31.23.8900150

APAC // +852.3127.6811

© 2016 InVue Security Products Inc. All rights reserved.  
InVue is a registered trademark of InVue Security Products.