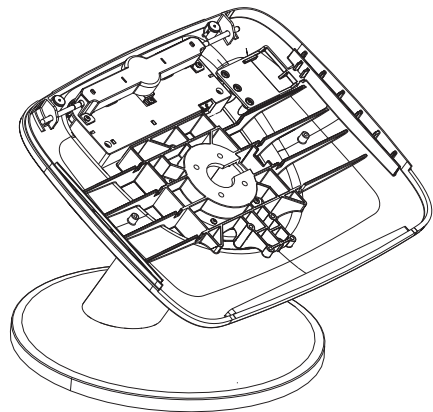
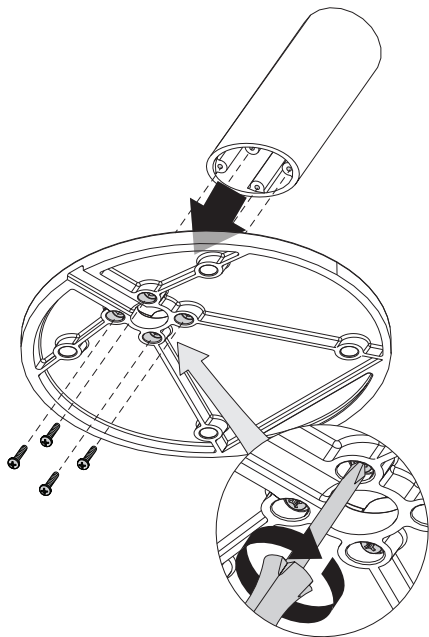


CT200

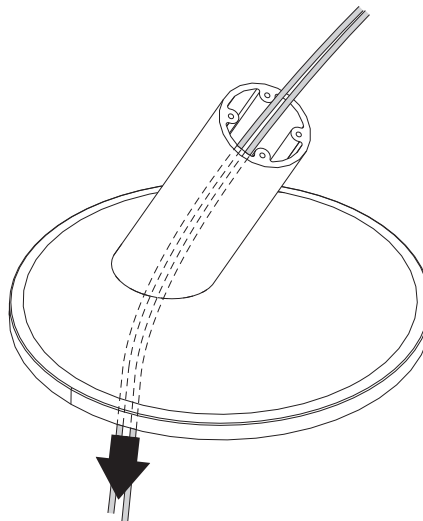
Freestanding Base
CTK1P004



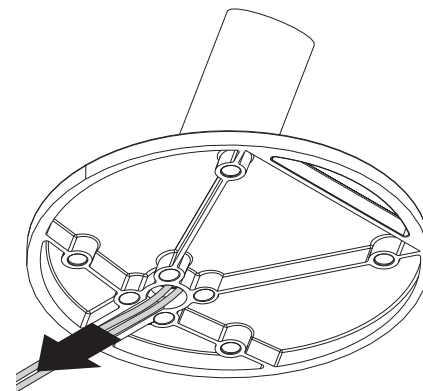
- 1 Using Phillips #2 screwdriver, attach post to base using four M4 screws provided.



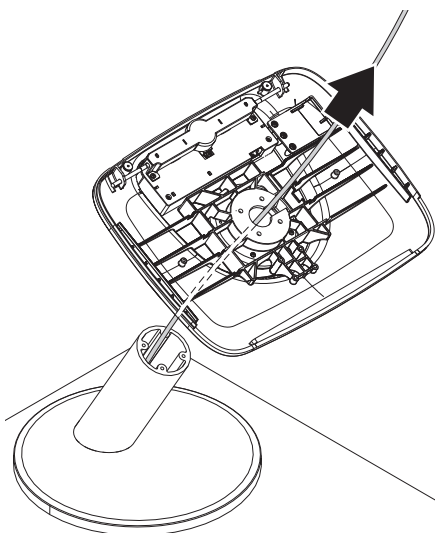
- 2 Feed tablet and/or peripheral power supply through stand. If using optional InVue 5V USB power supply (PS512), feed that cable through.



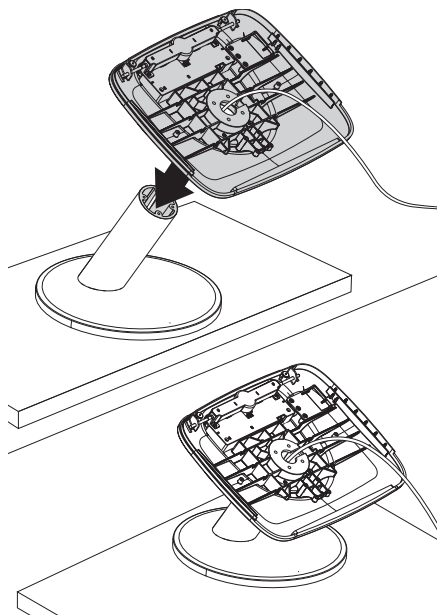
- 3 Route cables out of back of stand, ensuring that cable falls into channel as shown.



- 4 Pull power cable through center hole in tablet frame. **Note: if using audio jack extender option, see those instructions now.**



- 5 Align tablet frame onto stand, making sure frame holes are aligned with the stand holes. Rest stand on frame.



- 6 See tablet frame instructions now.



SD0357 Rev0 06/07/16

inVue

www.invue.com

NA / LATAM // 704.752.6513 • 888.55.INVUE

EMEA // +31.23.8900150

APAC // +852.3127.6811