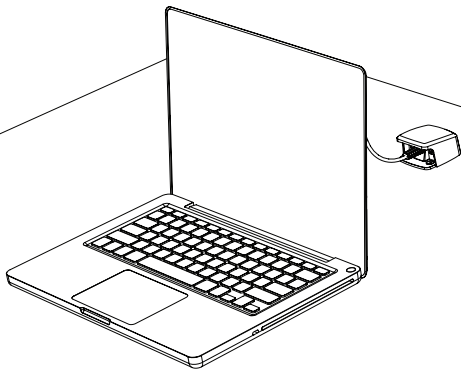


inVue®

LTO III

Laptop & Tablet Security

LTO1551



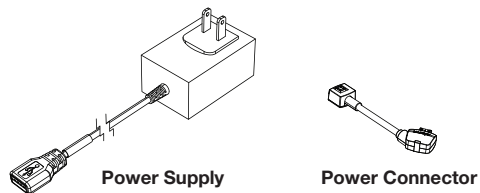
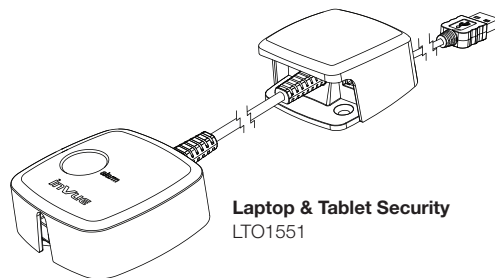
Read entire instruction guide before starting installation.

System Components

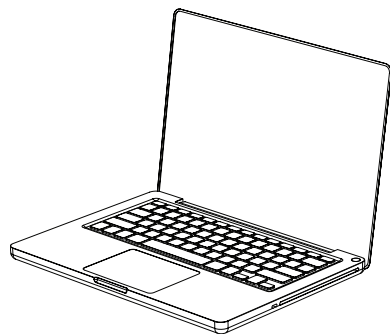
1. Laptop & Tablet Security
2. IR Key (*not included*)
3. Power connector (*if powering up merchandise, order separately*)
4. InVue or OEM Power Supply (*if powering up merchandise, order separately*)

System Overview

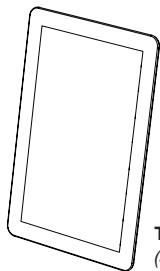
The LTO III Laptop and Tablet Security protects all tablets and laptops.



Attaching Merchandise



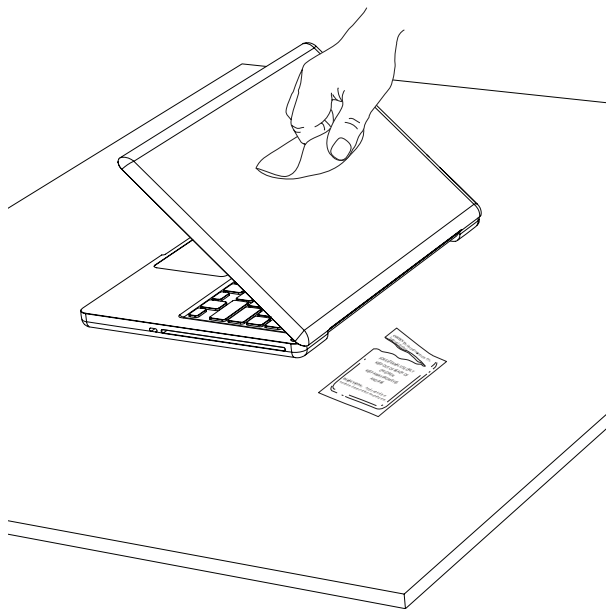
Laptop
(See page 5)



Tablet
(See page 10)

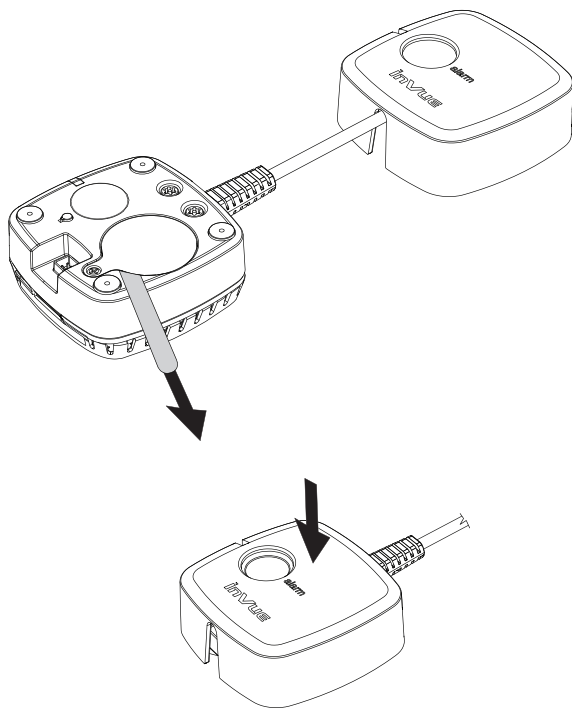
1

Wipe display counter and back of merchandise with alcohol wipe provided. **Let it dry completely.**

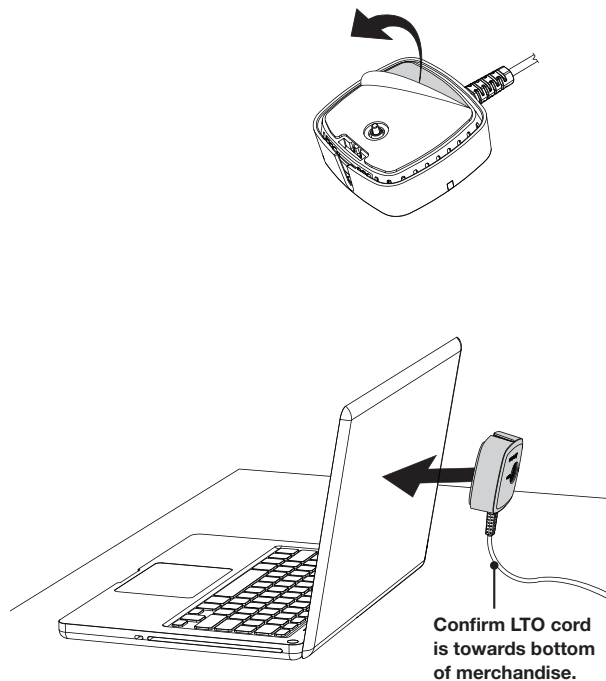


2

Remove white tab to activate battery. Snap cover onto alarm module. Push down on cover until you hear a "click."

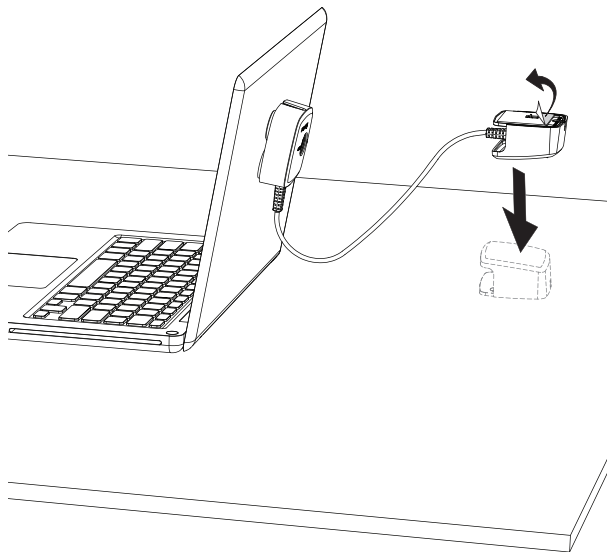
**3**

Remove clear film from adhesive on alarm module. Confirm LTO cord is towards bottom of merchandise. Center LTO alarm module on back of merchandise and press firmly for at least 10 seconds.



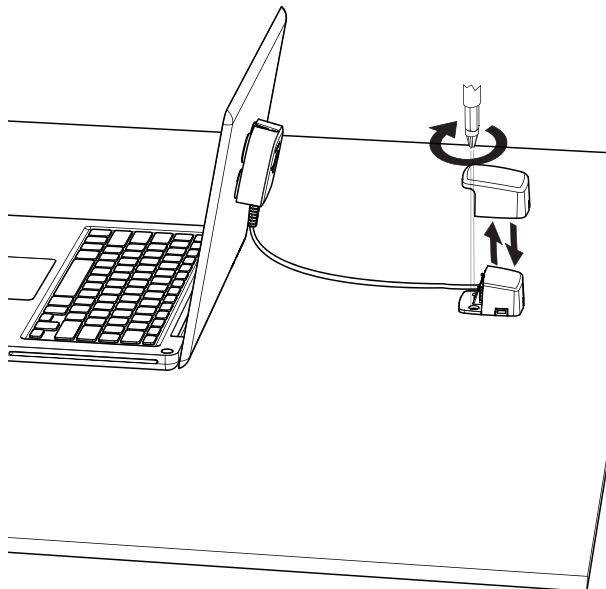
4a

Adhesive mount or screw mount fuse of laptop security to display counter. **Adhesive Mount:** Remove clear film from base of fuse end. Place on display counter and press firmly for at least 10 seconds.

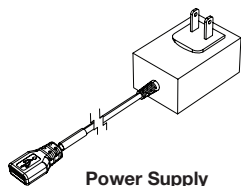
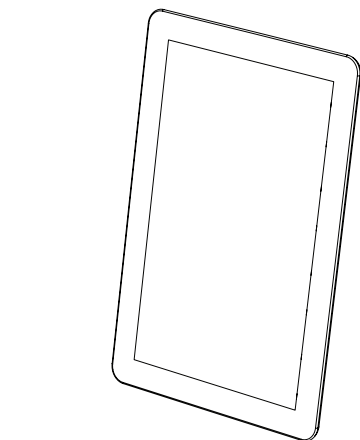


4b

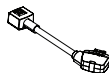
Screw Mount: Remove cover. Drill holes and tighten screw. Attach cover back on fuse end.



Attaching Merchandise – Tablet



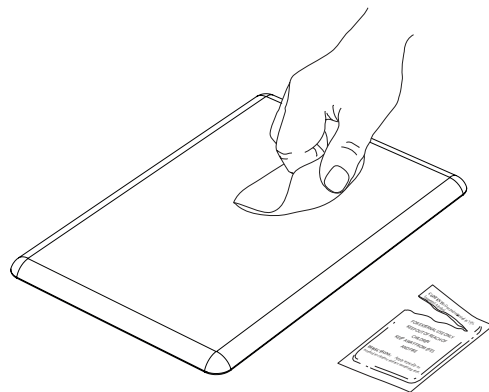
Power Supply
(InVue or OEM)



Power Connector
(determined by merchandise)

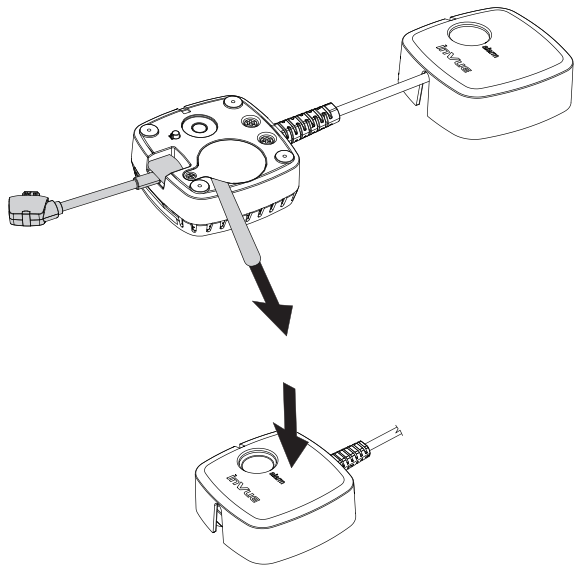
1

*Wipe back of merchandise with alcohol wipe provided.
Let it dry completely.*



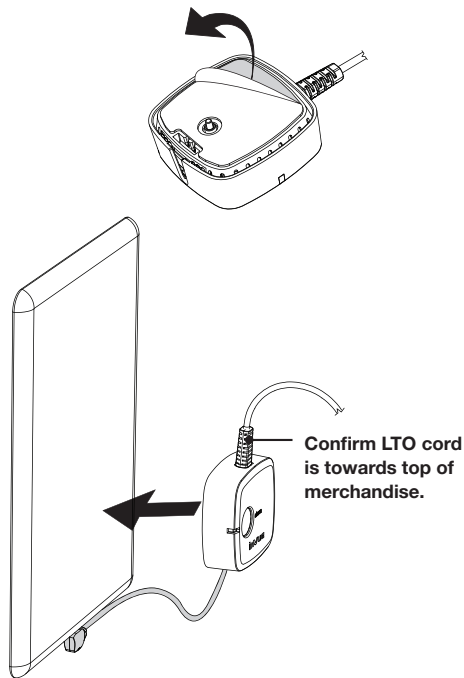
2

Remove white tab to activate battery. **If powering merchandise:** Plug power connector into alarm module. Snap cover onto alarm module. Push down on cover until you hear a "click."



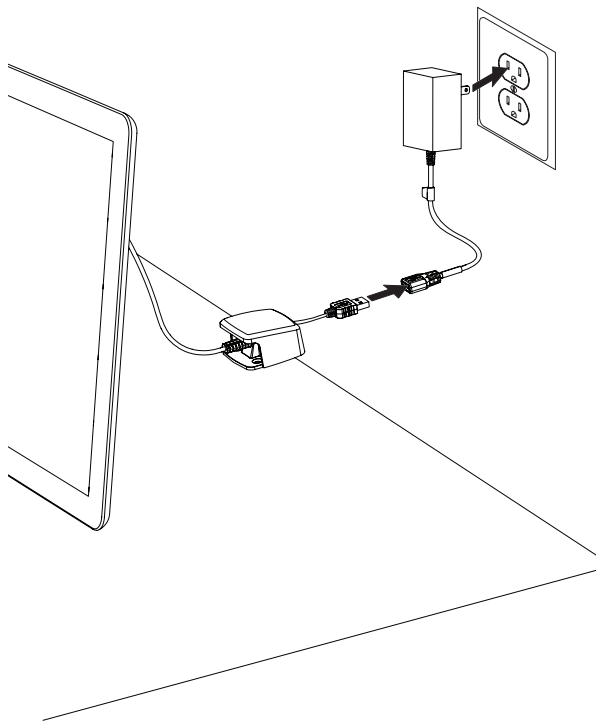
3

Remove clear film from adhesive on alarm module. Plug power connector into merchandise. Confirm LTO cord is towards top of merchandise. Center LTO alarm module on back of merchandise and press firmly for at least 10 seconds.

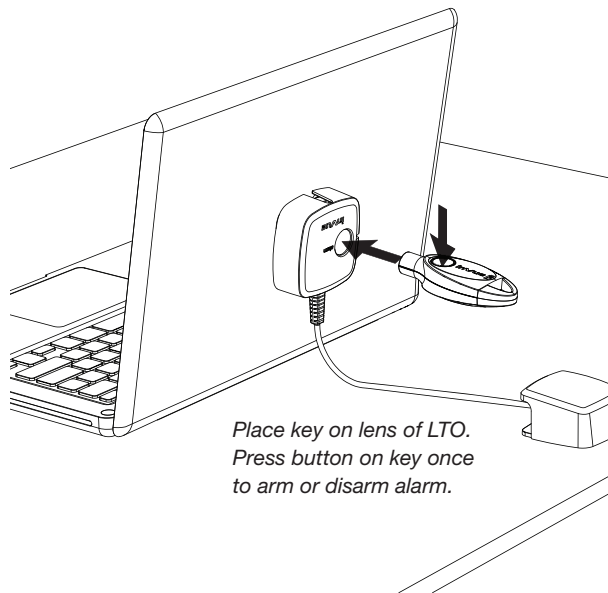


4

Plug InVue power supply or OEM power supply to LTO fuse. Plug power supply into outlet.



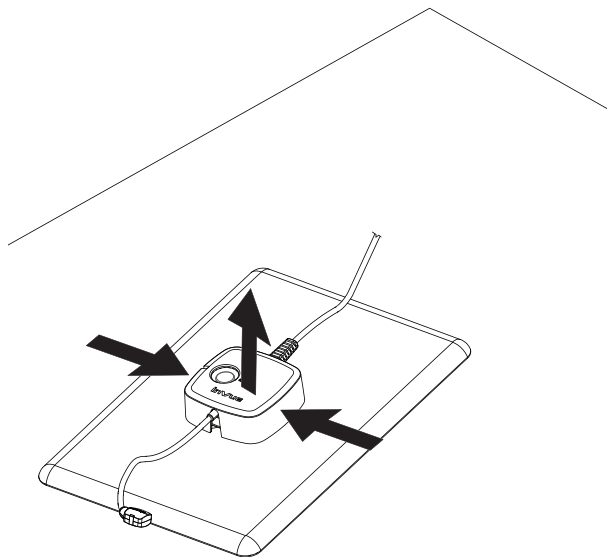
Arm/Disarm LTO



*Place key on lens of LTO.
Press button on key once
to arm or disarm alarm.*

Re-merchandising – Removing Cover

Squeeze both sides of cover and lift up to remove cover.

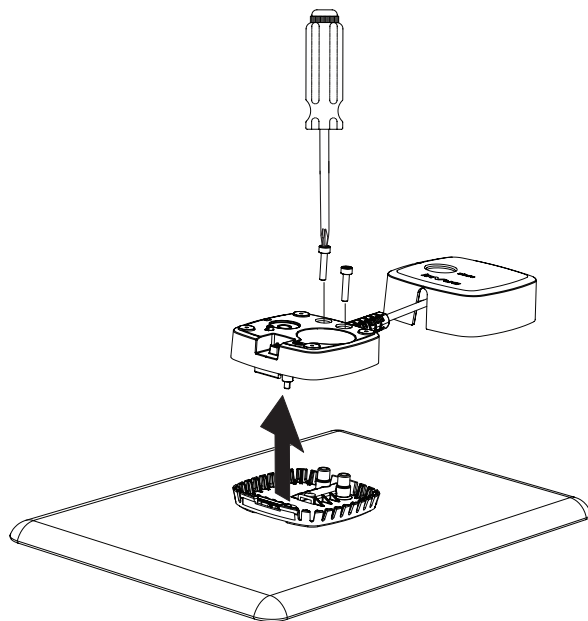


Re-merchandising – Removing Alarm Unit

To change tablet position on display (shown below):

Remove both screws with screwdriver to remove alarm unit.

To completely remove position on display: Use removal tool (MP254 - not shown).





tough security made easy

www.invuesecurity.com

Corporate Office (North America) // 704.752.6513 • 888.55.INVUE

Europe, Middle East & Africa // +31.23.8900150

Asia Pacific // +852.3127.6811

Latin America // +52.55.90003957