



# The toughest mechanical security solution available.

## LT50

### Mechanical Laptop and Tablet Tether

- Cut resistant steel cable provides over 200 lbs. of pull force vs 140 lbs for traditional mechanical laptop locks
- Easy to apply, easy to remove – first to utilize Command Strip technology for easy application and removal without damaging merchandise
- Virtually invisible when on display
- Versatile mounting options for laptops, tablets and eReaders



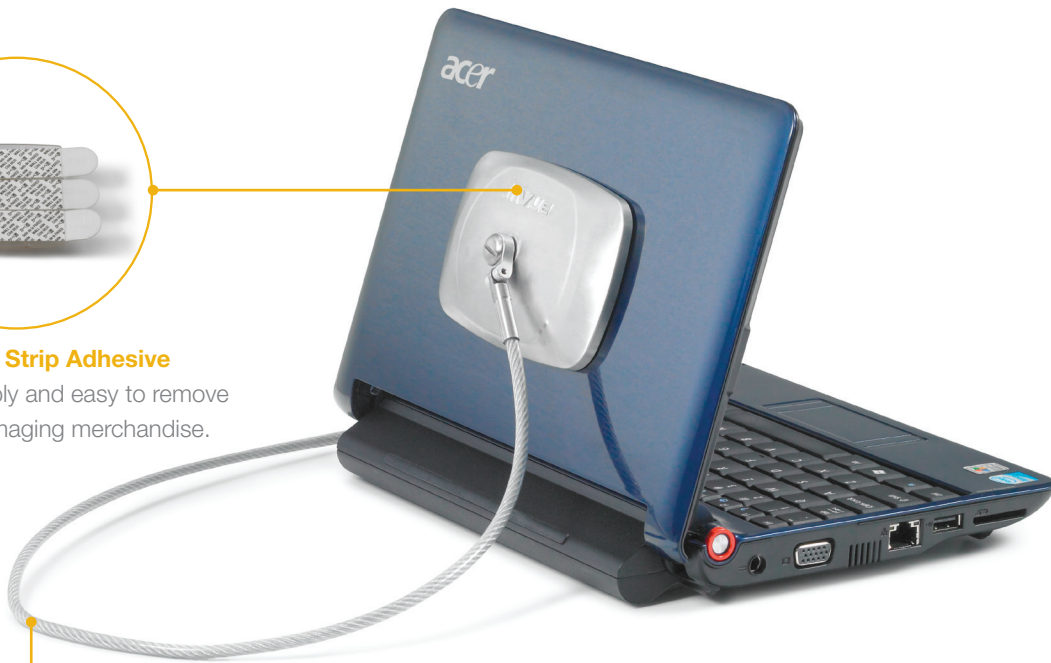
Cut resistant steel cable  
provides 200 lbs of pull  
force for maximum security.

## LT50 Mechanical Laptop Tether



### Command Strip Adhesive

Easy to apply and easy to remove without damaging merchandise.



### Tough Security

Over 200 lbs of pull force vs 140 lbs for traditional mechanical laptop locks. Features a cut resistant steel cable.

### Versatile Mounting Options

For laptops, tablets and eReaders.



## product ordering

ORDER CODE	DESCRIPTION	EXTERNAL DIM. (L x W x D)	CARTON QTY.	CARTON WT.
LT50	Laptop Security	8.0" L x 6.02" W x 0.60" D (20.3cm L x 15.3cm W x 1.6cm D)	1	0.55 lbs (0.26 kg)
LT51	Replacement Adhesive Plate	3.3" L x 2.6" W x 0.60" D (8.5cm L x 6.6cm W x 1.4cm D)	1	0.10 lbs (0.06 kg)

**CORPORATE OFFICE** // North America// 704.752.6513// 888.55.INVUE

**EUROPEAN OFFICE** // The Netherlands // +31.23.8900150

**ASIAN OFFICE** // Singapore // +65.6766.4844

**LATIN AMERICA OFFICE** // Mexico // +52.55.90003957

**inVUE**  
SECURITY PRODUCTS®

©2011 InVue Security Products. No endorsement of InVue products has been made by any of the manufacturers of the products shown. Product is sold pursuant to InVue's warranty which can be found at [www.invuesecurity.com/english/warranty.html](http://www.invuesecurity.com/english/warranty.html)

[invuesecurity.com](http://invuesecurity.com)  
©2011 InVue Security Products